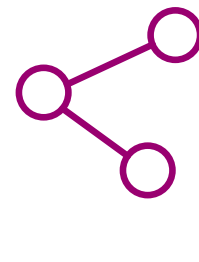


BioSolve *Connect*: Empowering Global Collaboration of BioSolve *Process*

BioSolve *Connect* is networked data storage application with a modern web-based user interface to allow your global BioSolve *Process* users to view and share datasets and process models in a collaborative and secure manner.



Centralized, SQL-based data repository



Share datasets, unit ops, and process models



Web-based UI for clearer communication

Ideal for companies with:

>4 users

>2 geographic sites



CONSISTENCY

- Central resource management of unit ops, process parameters, and cost information
- Everyone globally shares the same data



ACCESSIBILITY

- Resides on your server for full access control
- User roles and permissions can be assigned



TRACEABILITY

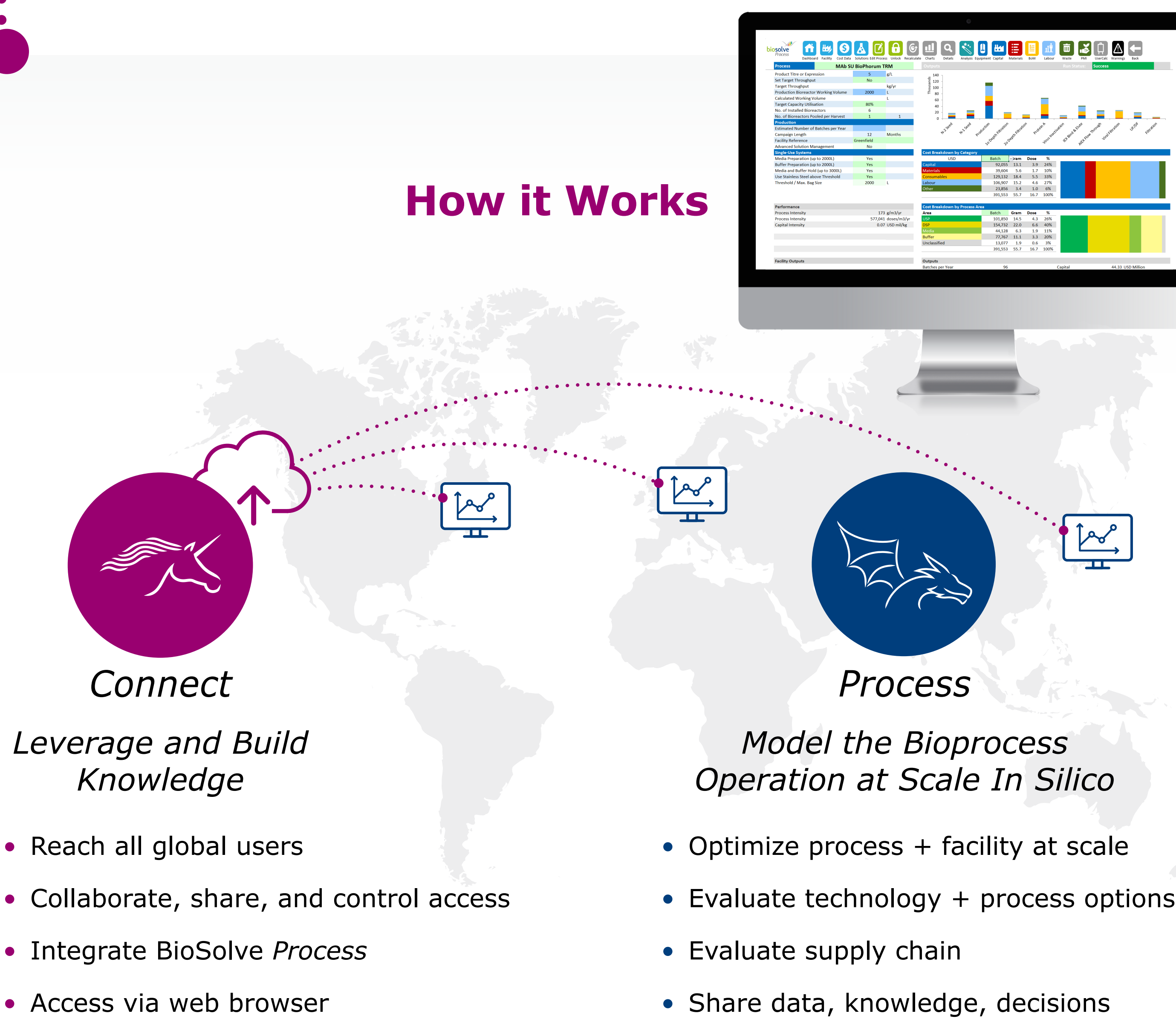
- See who added data and when
- Decide which users have access to which data



COMMUNICATION

- Collaborate with your organization's process modellers around the world
- Share input data with management

How it Works

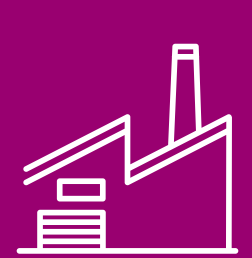


Store and Share



COST

Both reference costs and site-specific costs



EQUIPMENT

Both reference equipment and site-specific equipment



PROCESS & UNIT OPERATIONS

For reference, modelling studies, and collaboration

Enhance User Interface For All Stakeholders

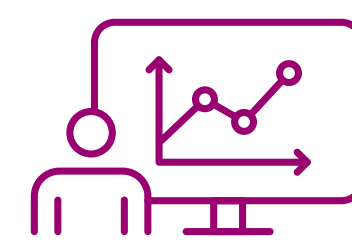
Both your process modelling experts and senior management benefit from the clean, web-based experience



Access data inputs from any web browser



Clear data visualization for expert users



Intuitive interface for management users



Who Should Use BioSolve *Connect*?

Mid-and large-sized biopharmaceutical manufacturers, CDMOs, and suppliers with:



Global Process Modelling Teams



Global Process Development Teams



Global Manufacturing Science Teams



Additional features coming soon, including **Visualizer**

Learn more at biopharmservices.com