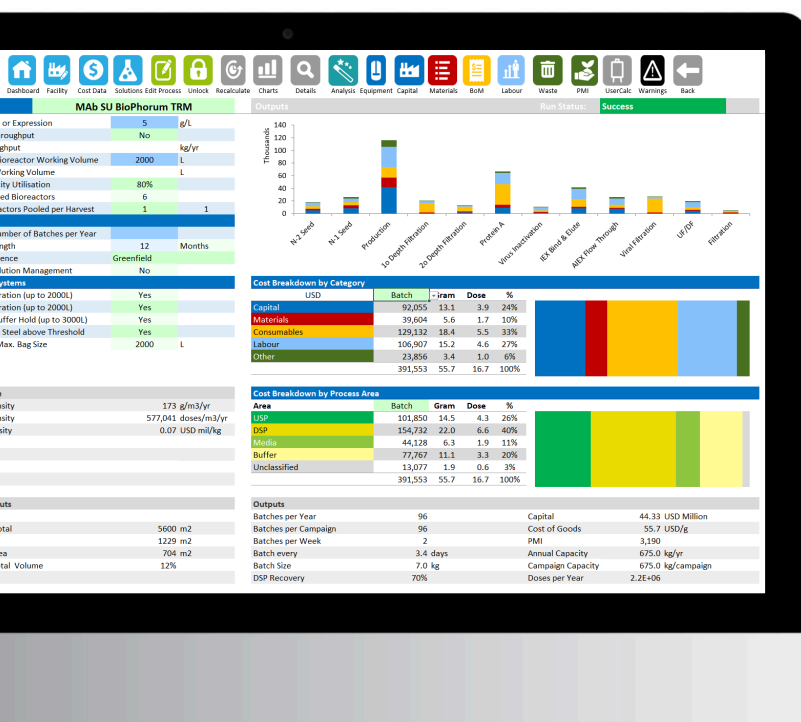


BioSolve Process

Adapt and Transform Your Bioprocess *In Silico*



BioSolve Process is the industry's leading process simulation software that helps drive your operational productivity prior to implementation through cost and sustainability modeling.



Minimise cost of bioprocessing



Gain supply chain insights during tech transfer



Minimise your process' environmental impact



CONFIGURABILITY

Use our library of unit operations to pre-populate your process

Apply our industry-averaged costs for raw materials, consumables, and capital equipment

Modify parameters and determine impact

KNOWLEDGE IS POWER

Integrated Knowledge Base includes costs for typical unit operation resources



SCALABILITY

Easily configure and scale unit operations

Evaluate your production capacity

Estimate scaled-up manufacturing costs

BE FLEXIBLE

Have a unique process?
Configure your own unit operations

Model Manufacturing Processes for a Wide Range of Therapeutic Modalities



Monoclonal Antibodies



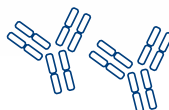
Vaccines



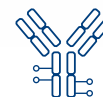
Viral Vectors



Microbial-Derived Proteins



Biosimilars



Antibody-Drug Conjugates



DATA ANALYSIS

Develop business case for new process technologies

Mitigate risk through automated process comparisons

Avoid surprises through operational sensitivity analyses

GREEN IS GOOD

Support corporate sustainability initiatives by optimizing environmental impact



REPORTING

Visualize data in exportable report formats

Prepare Bills of Material and Process Mass Intensities

Communicate findings clearly to upper management

WORK SMARTER, NOT HARDER

Gain supply chain insights and optimize your inventory

Feature Rich for Today's Biomanufacturers

- **Platform Assessment:** Evaluate batch, fed-batch, or continuous processes
- **Cost Data:** Access annually updated bench marked data across industry
- **Parameters:** Modify capital, labour, waste-handling, & other CAPEX & OPEX aspects
- **Consumables Kits:** Manage your single-use tubing, connectors, & devices as one assembly
- **Facility Support:** Determine the support equipment required to run the facility

NEW in BioSolve *Process* 9



Sustainability Metrics



Process Mass Intensity



Energy Load



Carbon Footprint

Who Should Use BioSolve Process?

- **Process Engineers** at biomanufacturers and suppliers
- **Production Managers** at biomanufacturers
- **CDMO's** in search of productivity gains
- **Process Development & MSAT Leads** evaluating new process technologies
- **Sustainability Directors** at biopharmaceutical manufacturers and suppliers
- **Product Managers** at bioprocess raw materials, consumables & equipment suppliers
- **Engineering Companies** creating facility budgets for current- & next-gen biotherapeutics, vaccines, & CGTs
- **Academics** studying improvements in manufacturing efficiency of biotherapeutics, vaccines, & CGTs



Purchase single-user or enterprise licenses



Access our customer support systems 24/7



Access Knowledge Base through our User Portal and BioSolve Central



Request custom training from our experts

The Dragon of BioSolve Process

Dragons of Eastern folklore represent benevolence and wisdom. These creatures have the power to morph into any shape or size, symbolizing transformation and adaptability.

We use the dragon to represent BioSolve Process, the leading *in silico* modeling tool for bioprocessing.

Biopharm Services Ltd.

Unit 1 (1st floor), Chess Business Park,
Moor Road, Chesham, Bucks, HP5 1SD
+44 (0) 1494 578011 | info@biopharmservices.com



biopharmservices.com