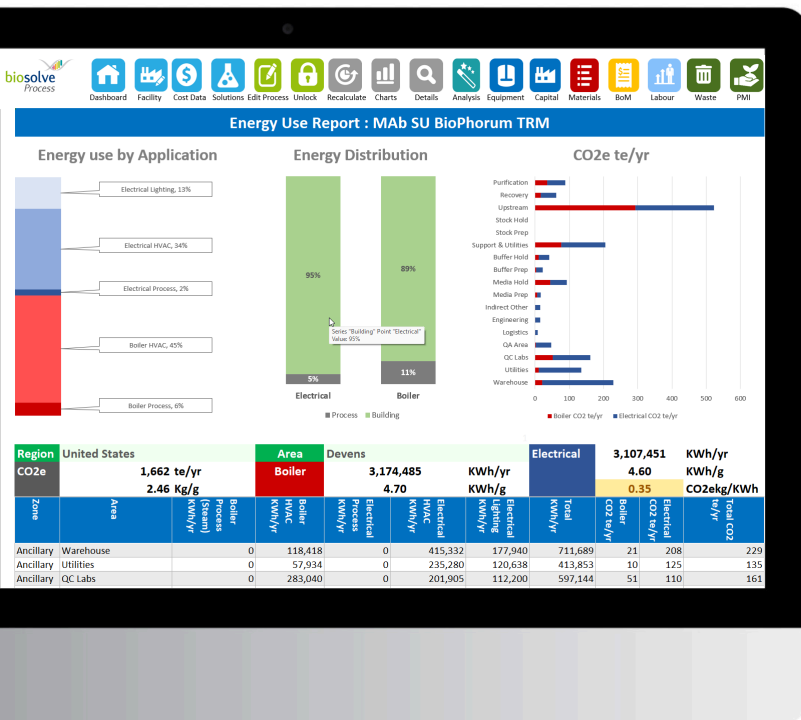




# Sustainability Metrics

## BioSolve Process 9 Add-In Module

Combining an updated version of our **Process Mass Intensity** report with a new **Environmental** report that calculates your operating energy load and operating carbon footprint.



Process Mass Intensity



Energy Load



Carbon Footprint

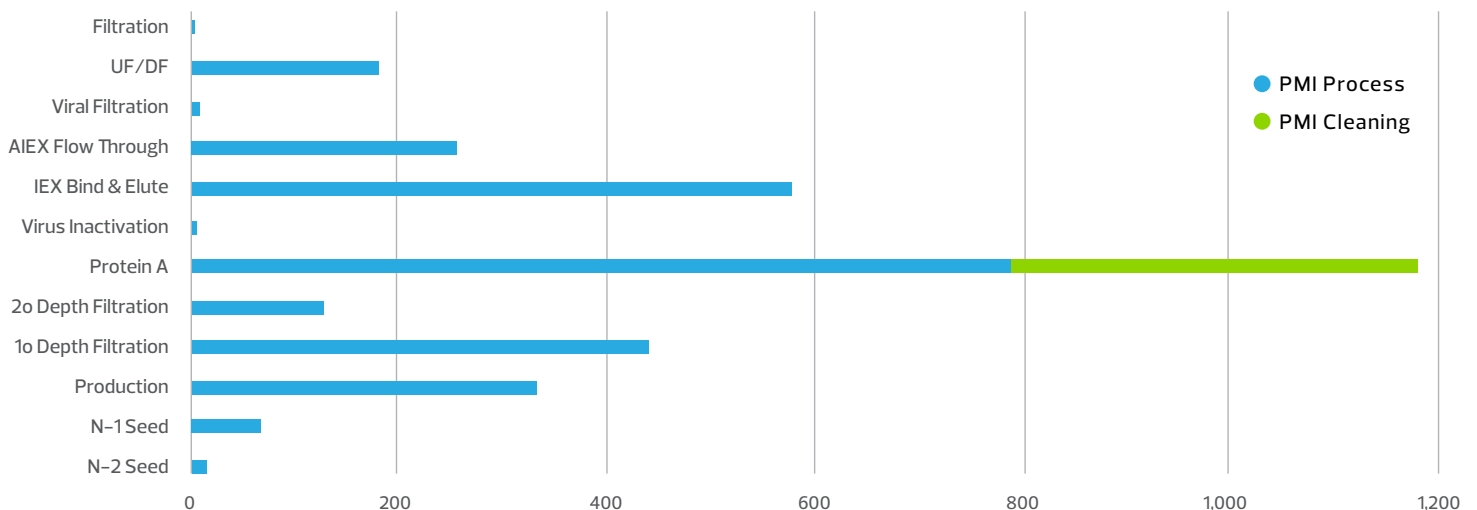


## Calculate Your **Process Mass Intensity**

**Process Mass Intensity (PMI)** provides a standard method for collecting mass data on the amount of water, raw material, and consumables used to produce 1 kg of API or product.



## Evaluate Your **PMI Breakdown** by Unit Operation



## Calculate Your **Facility Operating Energy Load & Operating Carbon Footprint**

Further your company's sustainability goals. Determine your facility's energy consumption and carbon footprint from your process operations based on intelligent geographic-based modelling.



### NEW HVAC

The largest contributor to your facility's energy usage and carbon footprint.



### NEW Process Equipment

Now you can establish the energy and carbon contributions of your process equipment.



### NEW CO2e

Know your facility's carbon dioxide equivalent.



### Take Action

Understand the impact of technology and process choices on your environmental footprint.

## What **Industry Experts** are Saying

"We need to continue studying and understanding the environmental sustainability implications of biopharmaceutical manufacturing, and then make sure we are communicating well both across the industry as well as to key stakeholders (including the public)"

Co-Founder & Director: **Aspire Sustainability**

## Availability of our Suite of Environmental Calculation Tools

Item	Sub-Item	BioSolve Process 8	BioSolve Process 9	Sustainability Metrics
PMI Calculations	Water Usage	•	•	
	Raw Materials	•	•	
	Consumables	•	•	
	Packaging		•	
	Cleaning Materials		•	
Energy Load Calculations	HVAC			•
	Process Equipment			•
Geographical Setting	Choose from 13 pre-populated global areas			•
	Additional configuration free for further 3 areas			•
CO2 Calculations	CO2e			•

\* Sustainability Metrics are only available as an add-in for BioSolve Process 9

## Our Support



Purchase single-user or enterprise licenses



Access our customer support systems 24/7



Access Knowledge Base through our User Portal and BioSolve Central



Request custom training from our experts



### BioSolve Process

BioSolve Process is the industry's leading process simulation software that helps drive your operational productivity prior to implementation through cost and sustainability modeling.

#### Biopharm Services Ltd.

Unit 1 (1st floor), Chess Business Park,  
Moor Road, Chesham, Bucks, HP5 1SD  
+44 (0) 1494 578011 | info@biopharmservices.com



biopharmservices.com